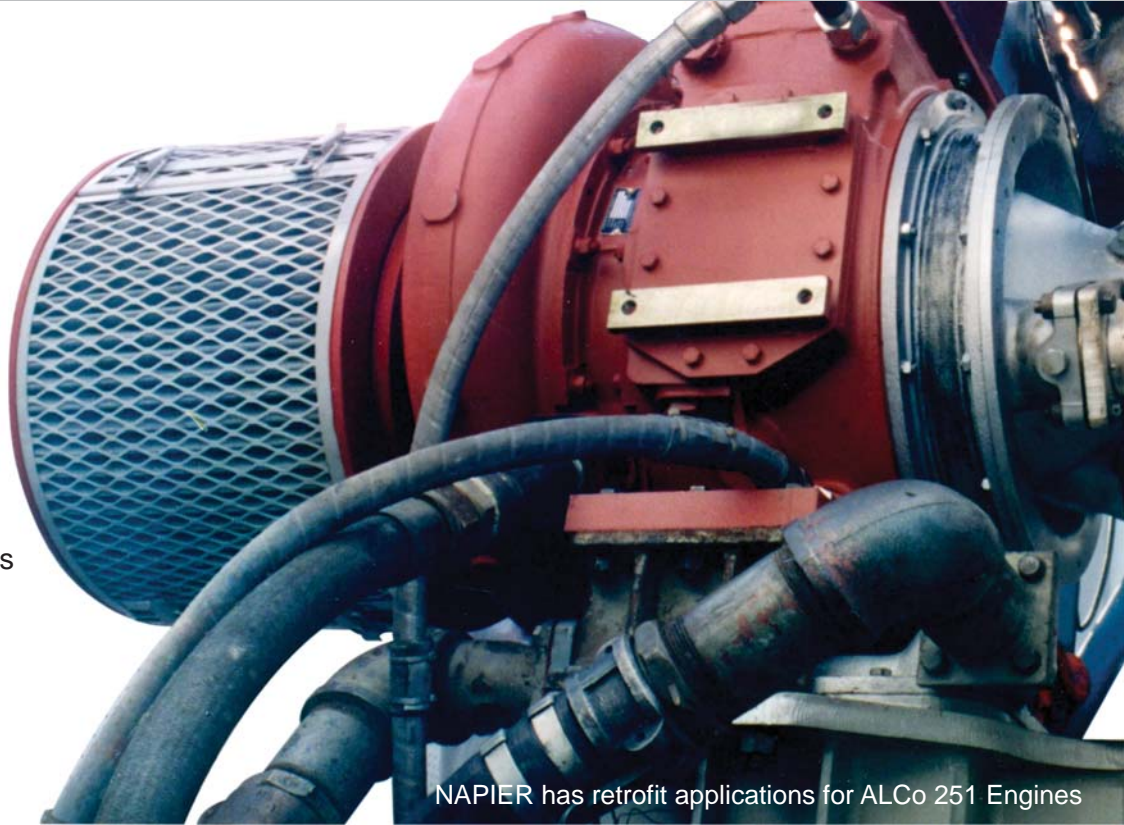


Authorized Turbocharger Services

- Re-blading with new OEM components
- Computerized balancing
- Overhaul of rotors & casings
- OEM spare parts & exchanges



NAPIER has retrofit applications for ALCo 251 Engines

MSHS Turbo Retrofit Program

Retrofit ALCo turbochargers using NAPIER products fully supported by MSHS

MSHS has the largest Napier turbocharger inventory in the Americas and our retrofit program focuses on owners and operators of older ALCo engines.

MSHS can retrofit your ALCo 251 engine turbocharger application with a NAPIER solution, providing a lifetime extension of your vessel or plant.

- Reduction of emissions & specific fuel oil consumption (SFOC)
- Temperature reduction & lifetime extension of combustion components
- Higher engine efficiency
- Improved spare parts availability & support
- Extended time between overhauls (TBO) & cost reduction

MOTOR-SERVICES HUGO STAMP, INC.

Florida/Bahamas: +1 954-763-3660

Louisiana: +1 504-265-8800

West Coast: +1 425-513-MSHS (6747)

Toll free: 800-622-6747

turbo@mshs.com www.mshs.com



NAPIER Retrofit	ALCo Turbocharger	ALCo Engine
NA155A350	350	6-251
NA155A320	320	6-251
NA255A520	520	12-251
NA295A720	720	16-251
NA355A165	165	12-251
NA355A165	165	16-251
NA355A165	165	18-251

NAPIER Retrofit	ALCo Turbocharger	ALCo Engine
NA155A131	131	6-251
NA155A131	131	6-251
NA255A131	131	8-251
NA295A131	131	12-251
NA295A131	131	16-251
NA295A165	165	12-251
NA295A165	165	16-251

Florida/Bahamas: +1 954-763-3660
 Louisiana: +1 504-265-8800
 West Coast: +1 425-513-MSHS (6747)
 Toll free: 800-622-6747
 turbo@mshs.com www.mshs.com



NAPIER produces a range of specially adapted turbochargers for retrofit applications on ALCo 251 engines.

On the retrofit turbochargers, identical positioning of the major engine interfaces provides direct interchangeability with the ALCo turbocharger being replaced. The addition of a NAPIER Turbocharger has major benefits for the operator:

- Higher efficiency resulting in reduced fuel consumption
- Reduced thermal loading - Improved reliability
- Reduced exhaust emissions and smoke production
- Improved spares and service availability

Contact

Cell Phone

E-Mail

Kelly Lacy

Operations Manager - Gulf Coast

+1 504-432-4360

kelly.lacy@mshs.com

Justin Roeser

Operations Manager - West Coast

+1 206-900-2616

justin.roeser@mshs.com

Alberto Cordero

Sales Director

+1 954-682-1341

alberto.cordero@mshs.com

Mladen Malovic

Regional Service Manager

+1 954-612-0529

mladen.malovic@mshs.com